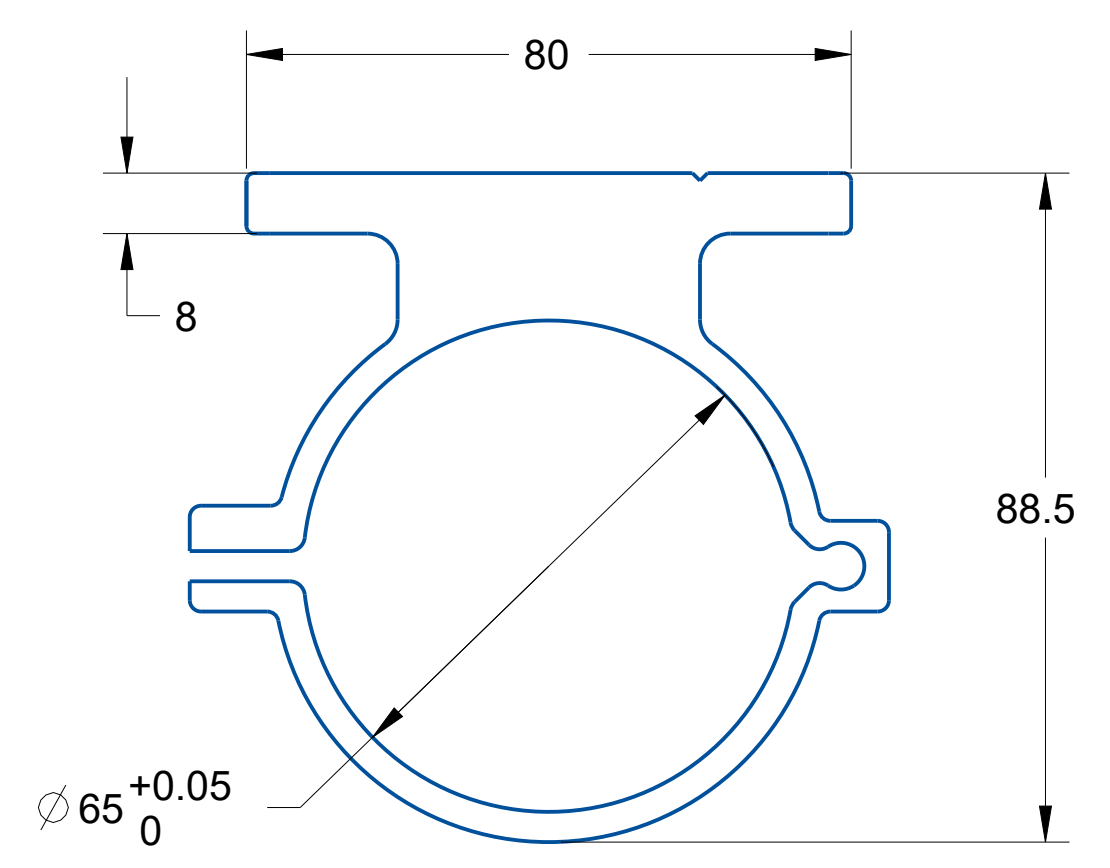
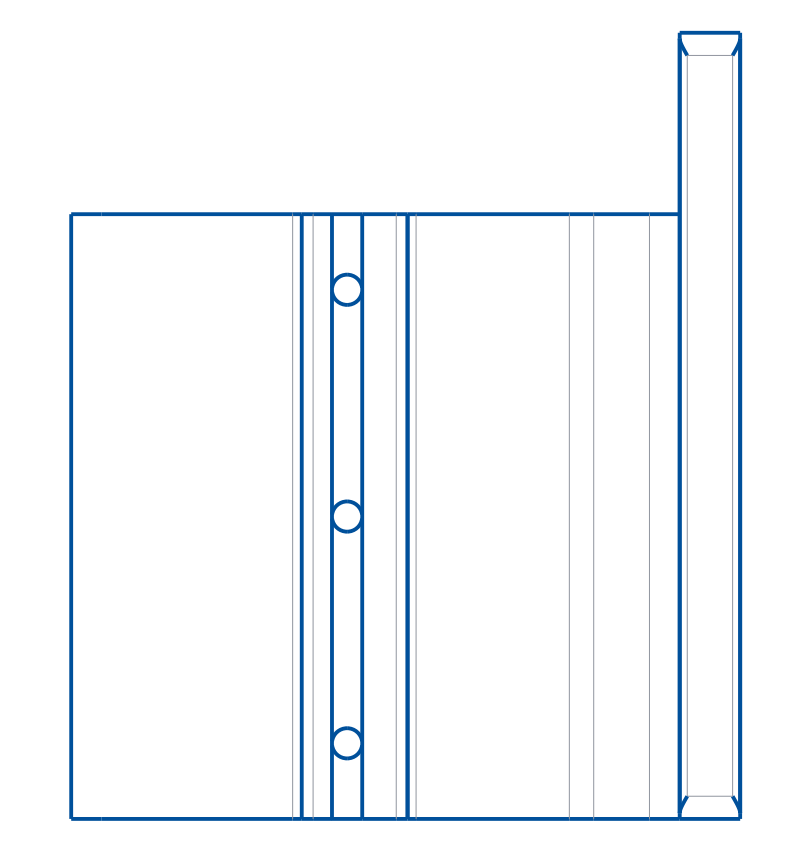
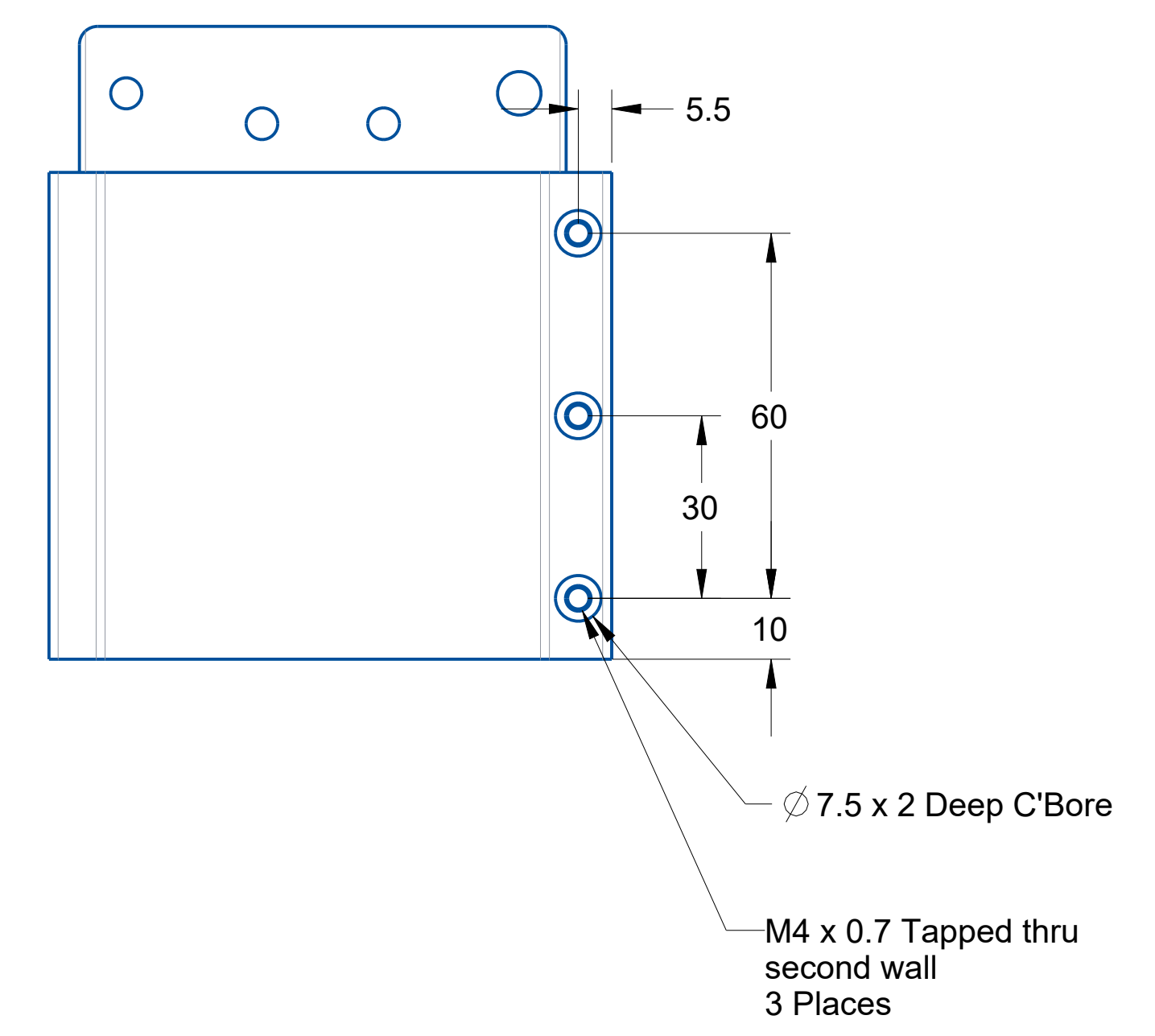
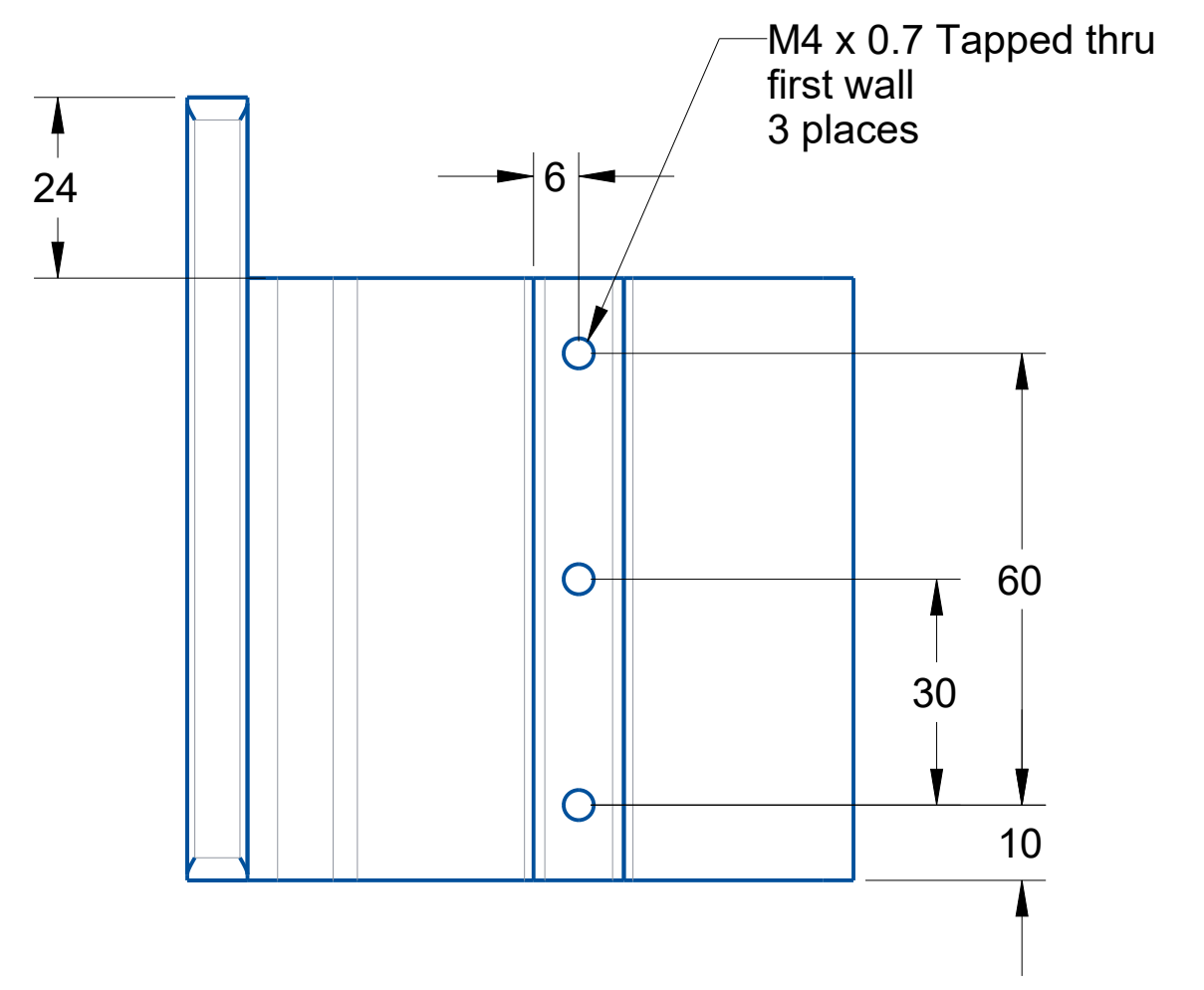
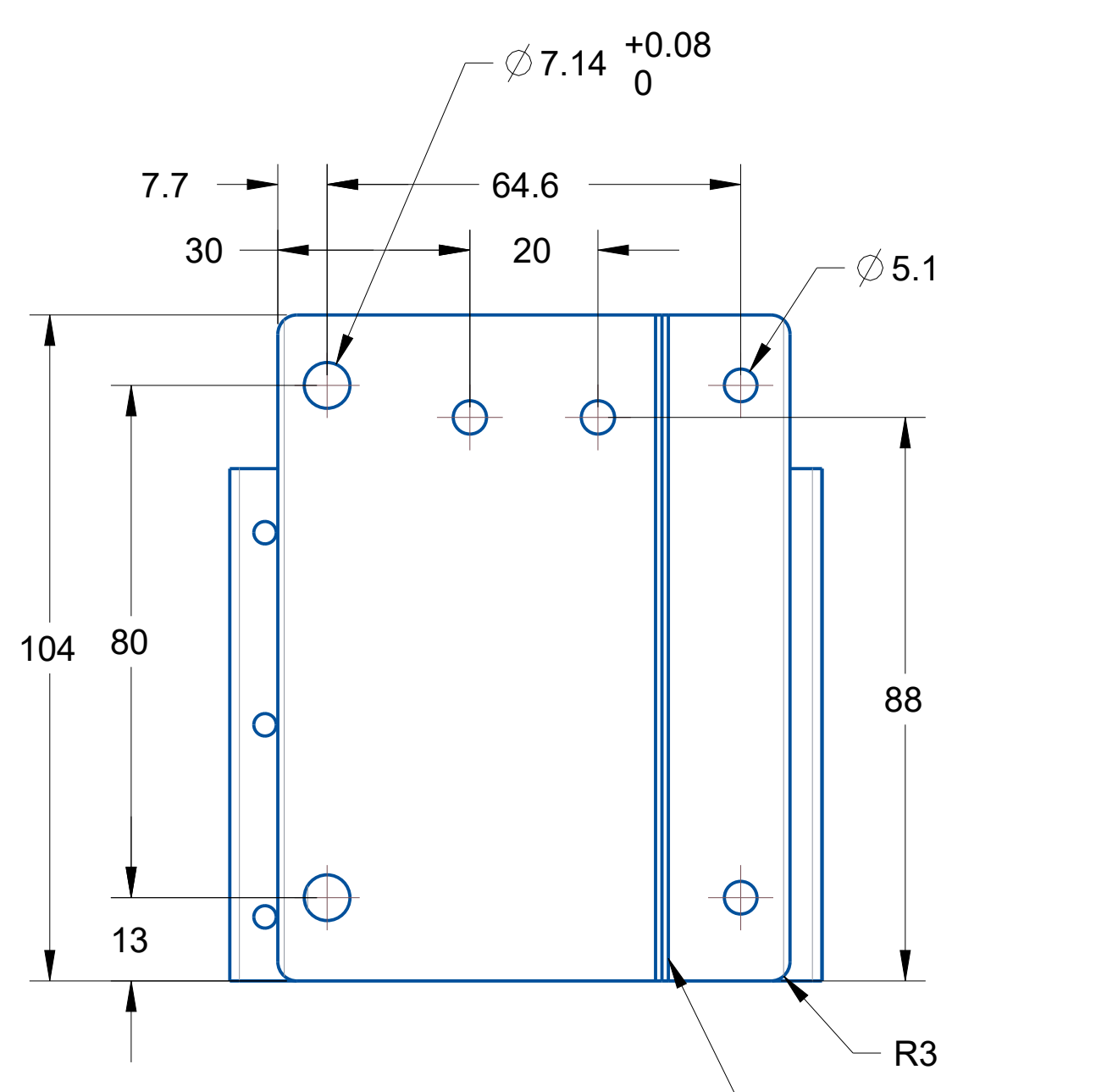
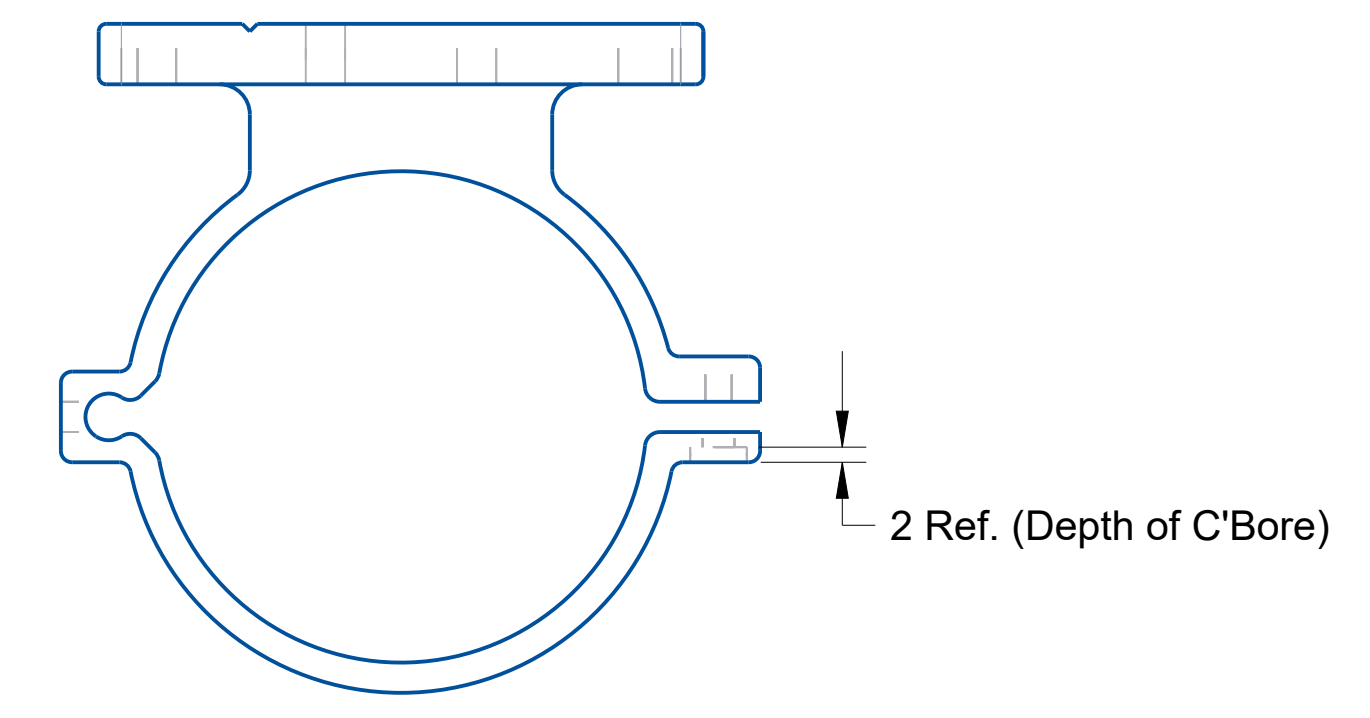


REVISIONS			
SYM	DESCRIPTION	BY	APPR
A	ORIGINAL	BJD	12/27/20



Extrusion Profile
(Dimensions for reference only. Use DXF file)



- Notes:
- All dimensions in millimeters.
 - Material: Aluminum 6063
 - Use supplied DXF for profile dimensions.
 - Straightness: 0.0125"/Foot
 - Twist: Less than 0.5"/Foot
 - Angular Tolerances of Profile: ±1°
 - Flatness of profile areas: 0.004"
 - Finish: Bead blast with gloss black anodize



The work is licensed under a Creative Commons Attribution-Share Alike 3.0 License

DRAWN	BJD	12/28/20
CHECKER		

Spindle Carriage 65mm		INVENTABLES.
80046		
SCALE		SHEET 1 OF 1